

# WHO WE ARE?

Shams Al-Jazae'ery Company for General Contracting and Supply Co.Ltd. was established in (2005) our company seeks to expand and develop through projects that have been completed or projects that are under implementation. Our company provides many services and has specialized since its inception in various contracting works and all works: of general equipment and services Public limited works such as construction works, finishing works, all electrical works, mechanical works and other works related to the field of general contracting.



SHAMS AL-JAZAE'ERY CO.LTD.  
للمقاولات العامة والتجهيز المحدودة



Basra - Al-Tuwaisa - near Maxi Mall



07829979992  
07713132226  
07822112238



shamsaljazaery@gmail.com





**SHAMS AL-JAZAE'ERY CO.LTD.** aims to become the leading company in the contracting sector companies in Iraq. In addition to being one of the major contracting companies in the service of our country, Iraq, through the implementation of advanced projects in the field of contracting.

**VISION**







We look forward to providing the highest levels of service to our clients on time and on budget. Providing distinguished services in the field of contracting that contribute and serve the community by creating a stimulating environment to provide the best services and optimal employment of skills and creativity in developing solutions and building an effective local and global partnership.

MESSAGE







# QUALITY POLICY

SHAMS AL-JAZAE'ERY CO.LTD. is a fast growing & well respected construction company involved in a full range of Engineering, Construction activity like Industrial, Commercial, Residential & Infrastructural works by formulating concepts into reality and by highlighting long term objectives, safety, progress and cost effectiveness, to achieve continual improvements.

It is the Company's policy to ensure that all projects are executed in accordance with contract specifications and drawings, within the contractual time frame, and in compliance with all legal requirements thus providing good value and satisfaction to our Client. We do this by employing the best qualified employees and seeking out and using reputable, state of the art equipment's and products. This will produce a service that conforms to specified standards of quality, reliability and performance.

It is our mission to:

- Carry out construction works in strict compliance with relevant measure, regulations and in accordance with relevant specifications and requirements.
- Provide and sustain effective utilization of resources.
- Provide a service that exceeds customer expectations Promotion of efficiency and cost effectiveness.
- Develop a challenging and rewarding work environment.
- Promote a culture of quality awareness and responsibility through leadership, communication and training, for direct working team members, suppliers and sub-contractors.
- Investing in personnel through education, training and development.
- Aim for zero snags.
- To fulfill social, moral, legal responsibility.





We recognize that this success depends on the experience and **QUALITY** of our team member and our associates and upon ongoing investment in their training and development and the constant upgrading of facilities. Quality objectives are set by the directors at management review. Such objectives are to be realistic and measured against company performance. The directors believe that all team members need to be aware of the company's commitment to the provision of a quality service to its clients.



# SAFETY POLICY

**Objectives: The safety policy shall be dealt with the following:**

- Maintaining high standards of safety, health & environment at all work places beside against to statutory requirements.
- To provide all employees safe and healthy environmental work place.
- To provide all necessary safeguards to employees against accidents.
- To fulfill legal, social, moral responsibilities for safety, health and environment
- To comply with statutory provisions and other environmental laws.
- The up-keep and maintenance of tools / machineries / vehicles / safety appliances in perfect working condition.
- Ensure all employees are educatory trained for safety awareness.





## **MEDICAL SUPPORT**

**The work site will be provided with first aid kit for the minor accident. Worker will be trained to use this kit for treating accidents. All workers must know about the location of these kits in work site. The work site will be provided also with transportation mean for emergency cases, a vehicle will be used as an ambulance and driver has the direction for the nearest medical center to the work site. Work in confined space may cause suffocation ,the attendant and his medical team will give the suffocated person the proper initial occurrence before moving him by the ambulance to the nearest hospital.**

## **SAFETY AND HEALTH ASSESSMENTS**

**The Company 's safety team with Safety managers are sufficient to manage all the hazards may happen at site through performance of work. Contractor representative of inspection with our company safety manager will make routine inspections at site periodically. All contractor inspection items found will be promptly corrected.**





## **TOOLS AND EQUIPMENT**

The Company provide and monitor to ensure that all tools are used in accordance with the manufacturer's recommendations. The Company permit properly trained and certified employees to use powered actuated tools. All vehicles and equipments on the job site will be equipped with backup alarms.

## **PERSONAL PROTECTIVE EQUIPMENT (PPE)**

The proper selection and use of Personal Protective Equipment (PPE) is an important element in preventing work-related injuries. However; PPE can provide us with a level of protection against injury and illness only when maintained and uses correctly. We should be aware of all the PPE requirements for our work site and assigned tasks and observe positions at all times. When PPE is specified for certain work assignments or locations, its use is mandatory. (Welders need to a special hard hat configuration to a accommodate the welding shield) .





# Personal Protective Equipment's

Shams Al-Jazae'ery Co. strives to engineer out potential hazards, so as to minimize worker exposures. However, in reality, not all hazards can be abated entirely. As a last line of defense, Shams Al Saduq recognizes the need for personal protective equipment. Personal Protective Equipment (PPE) is any outer shell that a worker dons to protect him or herself from a certain hazard. Examples that Shams Al Saduq employee uses at work sites are:

- **Safety Glasses**

Protects from chippings, dust, lights

- **Ear Protection**

Protects ears from noise damage

- **Safety Hardhat**

Minimizes injury to the crown of the head

- **Safety toed shoes**

Protects feet from rolling, dropped, or any crushing actions.

- **Safety Gloves**

Minimizes injuries to the hand

- **Safety Vests**

Visibilities of workers to prevent unwanted injury





# SITE MEETINGS

The Company's project manager will hold number of meetings with the construction manager and the safety manager to discuss the weekly planning and scheduling of work.

The Company's supervisors will conduct daily, pre-work meetings to talk about the daily work, what tools will be needed, who will be doing what task and the hazards. The daily pre-job meeting plan will be documented. Reporting The Company will provide the contractor reports of investigations and injuries and accidents and hours worked. The Company will report immediately to the director about any personnel injury, accident, or death of one of our employees and a written report with 24 hours. This immediate report can be verbally. Training The Company's workers will go through initial site training before start the work and if someone became late he will get the same training as everyone else. Training workers will include the following:

- Safety rules will be enforced.
- any worker violate rules will be fired.
- Workers should wear the PPE.
- Workers get instructions to manage the emergencies.
- Workers use tools properly.
- Workers get instructions about using scaffolds and fall protection
- If workers get injured they should report to their supervisor before leaving the site.





# SPECIALTIES OF THE COMPANY

1. Scratching , grading and leveling the yards and grounds of the facilitations by its all types of bridges, express ways , small or large scale airports and different areas as well as filling works according to the specifications and designs prepared for this turn achieving the max required site.
2. Performing all reinforcement and ordinary concreting works of different required mixtures for the works mentioned in item 1 above to achieve the required compressive and also we can perform all ordinary and reinforcement concreting works for site casting works such as concrete piling works, casting foundations , floors, lintels and columns for ceilings and parapets. Also, reinforcement precast for the piles, lintels , protection and security concreting works and guard rooms using precast sections.
3. Soil elevations using aggregates (sub-base) of its different types achieving max. required density according to prepared designs and also execution barracking works of its all types.
4. Coating with asphalt for access ways, roads , express ways, public yards, stocking yard, runways using different required types of asphalt according to designs and asphaltic mixtures.
5. Treating all types of defects in the grounds of the roars, runways and yards by its different soil , concrete and asphaltic roads achieving the required compressive resistance according to the designs prepared for that treating and maintain banks of the roads and bridges entrances, barracks of its all types and steel and concrete piling works.





## SPECIALTIES OF THE COMPANY

6. Erection and maintenance all types of sewerage, waste management including pipelining works , maintaining septic tanks, pump stations of its different capacities according to the design requirements including ,opening its obstructions.

7. Supplying and execution and maintaining all required sanitary works by its different types including covering with ceramic for floors and walls.

8. Construction mutli-story buildings of concrete or steel structures with the required maintenance works for such these facilitations by its all types including erection halls for arriving and departing passengers at airports, ports , free zones and halls of goods either those exposed for the weather conditions or that under sheds.

9. Supplying, execution and maintenance all electrical works of its different types including installing and testing all cooling, air conditioning and heating .

10. Drilling artesian wells with lining works and earthing system cathodic protection.

11. Supplying and installing and maintaining R.O. WTP and other water projects.

12. Supplying electrical, mechanical and office, PPE equipments and parts from its genuine origins.





# SUPPLY OF MATERIALS & LOGISTICS SUPPLIES

With a decade of experience behind us we Shams Al Saduq Co understand the client requirements to supplies materials purchasing locally and from international markets to the oil companies in Iraq based on a contract agreement. We ensure to deliver the materials on a timely manner. We supply only genuine goods. Quality is an important part of the supply chain, SSC checks quality before goods arrive to the customer. We give our customers the flexibilities to change or replace the goods on their needs.

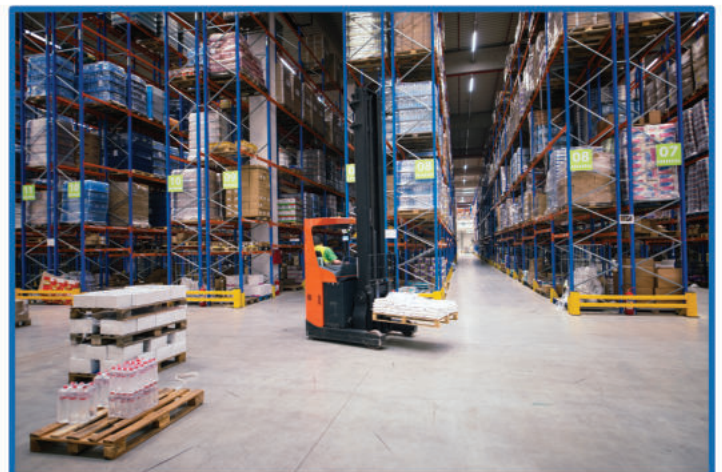
We include a variety of information about the item to be sourced, such as:

- Physical description
- Dimensions measurements
- Specifications | Part number
- Industrial standards
- Brand name
- Expiry date
- Quality



List of Supplies where we have the capabilities to deliver but not limited to:

- General and Office Supplies
- Mechanical, Electrical, Plumbing materials
- Construction materials
- Chemical Supplies



Additionally, our warehouses may also operate in continuous inventory mode this means that after every pre-defined number of products are picked an inventory control of the location will be performed to check for any discrepancies in stock quantities.





# CONSTRUCTION & ENGINEERING

**Shams Al-Jazae'ery Co. is committed to an excellence in construction works by way of expertise, experience, and a strong work ethic. Shams Al - Jazae'ery has a talented and dedicated staffs that takes pride in their work while utilizing the latest construction technologies.**

**Good organization, a perfect quality control plan, accurate time schedules and respect are some of main principles we adhere to in an effort to obtain the lasting client satisfaction on which we've built our reputation. Throughout our history, we have developed a wide portfolio of satisfied government, local and foreign commercial clients who recognize and depend on the quality of our services. Successful cooperation with many local and foreign partners, through dedication to time and budget constraints, has resulted in winning performance, highly-valued services, and economically vital projects proudly representing the high quality of our work.**

**Advanced technology and a solid equipment and material base are consistently brought to bear by our dedicated senior staff, the majority of whom are highly educated and skilled civil, electrical, and architectural engineers, design specialists, surveyors, construction consultants, and supervisors all involved in varying types of successful construction and general contracting projects throughout Iraq.**







# DESIGNING & FABRICATION SERVICES

**Fabricating:** is a process of converting raw materials into a product. It can be described as the transformation of materials into items of the greater value by means of one or more processing and/or assembly operation.

**Shams Al-Jazae'ery Co. Pay a lot of attention to the details in order to deliver the clients exactly what they need. Manufacturing process including: study, designing, fabricating and finally functional.**

- Manufacturing Trolley
- Manufacturing Steel structures
- Modifications of Containers (Inside and Outside)
- Manufacturing Shades with different sizes
- Cutting & Welding
- Testing & Inspection services
- Manufacturing Racks



**We Commit To Provide Excellence And Value In Our Fabrication Solutions, Our Dedicated Approach Delivers Exceptional Quality, Predictable Outcomes, Continuous Growth, Opportunitites, And Mutually Benefical Relationships.**

**Shams Al-Jazae'ery have a stretched experiencesproviding services to many companies by supplying materials supporting their operations.**

- Iron Channels – C type, H type and I type
- M.S. Plates
- S.S. Pipes
- Grating Plates
- Welding machines
- Welding tools & accessories





# GENERAL TRANSPORTATION SERVICES

Shams Al-Jazae'ery Co has been the transportation service provider of choice for companies in need of sound and dependable logistics solutions. Our efficient drivers, reliable equipment, innovative technology, and creative solutions have earned us the trust of a wide clients in throughout Iraq. We develop customized logistical plans for our customer's freight & logistics needs. From dispatch to destination, we monitor the driver and the cargo, seeing to it that both arrive punctually and safely.

## Type of Equipment's & Vehicles We Provide but not Limited To

- General transportation vehicles
- Construction equipment's & vehicles
- Logistics support equipment's & vehicles
- Lifting equipment's



## LOGISTICS SERVICES

Shams Al-Jazae'ery Co. Logistics has a process of planning, implementing and controlling the efficient, cost effective flow and storage of raw materials, equipment's parking lot, in process of inventory, finished goods and related information from the point of origin, renting to point of consumption for the purpose of confirming to the customer requirements. Our logistics experts work with our customers to understand the challenges of their supply chain and design a program for those challenges We are uncompromised in our commitment to the health and safety of our employees, subcontractors, customers, community, and general public. Shams Al-Jazae'ery believes safety is the responsibility of all employees, from upper management to the individual worker We are a family company you can trust for a solution to all your logistics needs







# JOURNEY MANAGEMENT

Shams Al - Jazae'ery Co. has a journey management plan to set off trip-specific instructions and guidelines designed to help employees complete official company trips safely and efficiently. As a general rule, road journeys that are expected to last more than 4 hours should have a journey management plan.

## IVMS Monitoring

- All our trucks are installed with IVMS and monitored by our journey manager
- Journey management plan checklist is been filled and hand over all time to the driver before the start of the journey.
- Trip is been monitored by our JM Manager until the truck reach the designated site
- Any sort of violation speed, the truck will be stopped immediately and the JM manager will take next step of action to control the situation.
- Same time if in case of delay to deliver, a message of notification will be informed to the client.
- Routes, estimated time and distance is been calculated before the journey start.
- Additional Risk Reduction Measures (Call-in frequency, travelling in convoy, travelling in daylight hours only).
- The journey involve travelling through areas where there are significant security risks,
- where medical emergency response services are not readily available or similar factors are given special consideration.
- Routing Map is been prepared on each journey trip.
- Website where our JM is monitored: [www.arvento.com](http://www.arvento.com).





# LIFTING EQUIPMENTS

Shams Al-Jazae'ery Co. lifting operations shall be risk assessed and planned in accordance. For repeated or routine operations, such planning is only necessary once, provided that an operating procedure or standard work method statement (WMS) is in place or documented in another way. Periodic revisions shall be carried out to make sure that no factors have changed.

Shams Al-Jazae'ery Co. have a planning of all lifting operations which shall as a minimum ensure that:

- All personnel involved with lifting operations are trained and familiarized.
- The travel path is clarified and any obstacles are removed before lifting commences.
- Barricading, signage and or spotter/s are in place to prevent personnel from walking or standing within the lift path or under the load.
- The lifting operation can be executed safely in relation to simultaneous operations
- Lifting equipment is suitable and will be used in accordance with the manufacturer's instructions.
- The lay down area can accommodate the load in terms of size and weight.

**Type of Lifting equipments we provide but not limited to:**

- Cranes – 25 ton to 120 ton
- Loader with rear crane 03 ton to 15 ton
- Forklifts – 03 ton to 15 ton
- Manlift – 18 meter long to 45 meter long







## **SSC QA/QC POLICY**

- Shams Al-Jazae'ery recognizes that in today's competitive marketplace, effective quality systems are essential when providing quality cost effective services to our clients. Management is totally committed to providing Commercial & Industrial General Contracting Services that comply fully with the specifications and expectations of our valued clients. Therefore, it is the policy of Shams Al-Jazae'ery to adhere strictly to this quality control program and to insure that this program and the requirements of our customers are met on each and every project we execute.
- Full authority for the implementation and administration of the quality controls described in this manual has been delegated to the Quality Control Manager "QCM". The QCM has the responsibility and organizational freedom to identify quality control problems, stop work, recommend solutions and verify resolution of such problems Project Managers are responsible for their assigned project's QA/QC activities. They may delegate the performance of their assigned duties to qualified individuals, but they shall retain full responsibility for completing their projects in strict accordance with established quality control policies and the client's specifications.
- The quality of all subcontractors and vendors shall be the joint responsibility of the QCM and the applicable Project Manager. All projects will be executed in a manner that emphasizes safety, quality, schedule and maximum cost effectiveness. Any commitment, conflicts, or non-conformance issues not resolved using current established Quality Assurance / Quality Control Procedures shall be brought to the attention of the undersigned for final resolution.





# GOALS

**We set an ambitious goal of developing The competencies of our team work continuously, In order to ensure the improvement of the role and performance of the company Raising the level of quality and professionalism of services that we offer, with the aim of strengthening the position of The company locally, regionally and globally.**







# COMPANY STAFF

Specialization	No.
Consultant Engineer	1
Electrical Engineer	3
Civil engineer	2
Space engineer	2
Lawyer	1
Formen	6
Drivers manager	1
Drivers	130











# EQUIPMENT & MACHINERIES

- Shovel
- Water Tanker
- Tipper
- Sand Blast
- Vibrator
- Cement Mixer
- Wooden Mold
- Crane
- Compactor
- Different Survey Tools
- Trucks
- Lifers
- Welding machines
- Electrical generators
- Grader
- Pickup







OUR  
WORKS





## Construction of a BRC fence

**Our company implemented and equipped the construction of a BRC fence for Anton Oil CO.**







# DRILLING ARTESIAN WELLS TO ENI CO. IN BARJISIYA







# Construction of cathodic protection rooms in Majnoon field







# PIPELINE PROJECT BETWEEN YAMAHA OIL FIELD AND FIELD STATION

1-Installing the sacrificial anodes for cathodic protection







**2-Install and connect Rectifier, Cathodic, and Anodic junction boxes and also permanent MMO anodes.**



**3-Install and connect Field Instruments and Actuators for Launcher and Receiver Skids .**





4-Install and connect SCADA and Control System and emergency shutdown systems.







**5-Extending and linking the Fiber Optic cable between Al Yamamah and Al Haqliyah stations.**







**6-Extending and linking the optical cable under Shatt Al-Arab using Dura line and Blowing techniques inside 4 HDD tube.**







## Construction of Al-Zurayji Road in Al-Ghazaliya area with a length of 1\15 km

Within the regions development projects for the year 2012  
 Beneficiary \ Directorate of Roads and Bridges  
 The executing company is Shams Al-Jazae'ery  
 Execution time \ 60 days

No.	Specifications	First month	Second month
1	Site planning and preparation work	■	
2	Skimming and spraying works for road lanes	■	
3	The heightening per liter is (25) cm thick, at a rate of (50) cm		■
4	Preparing and brushing the crushed gravel, class (B)		■
5	Paving with a layer of asphalt 10 cm thick		■





**Electricity maintenance work inside ENI CO. In Al-Barjisiya.**







**Transfer of equipment from the port of Khor Al Zubair to the BNL gas site in Northern Rumaila Contract with Marlog CO.**







**Equipping the companies operating in the port of Faw mechanisms and materials.**







**Transportation with the Turkish Al-Masnak Company from Umm Qasr port to the Majnoon oil field.**







**Transfer of materials from the port of Khor Al Zubair to Rumaila oil field for the German company Marlog.**







# Other completed projects

**1-Constructing the building of the Nationality in Zubair for the account of Al-Dar Contracts Company.**

**2-Constructing 10 houses in Waha'a Al-Qae'ed for the account of Al-Dar Contracts Company.**

**3-Water Network Project for Al-Qa'ed Q. for the account of Al-Dar Contracts Company.**

**4-Project of Wafa'a Al-Qa'ed pumping station for the account of Al-Dar Contracts Company.**

**5-Constructing District Governor at Zubair for the account of Al-Dar Contracts Company.**

**6-Rehabilitation works for Al-Muhalab Bin Safrah School for the account of BECTHEL Co.**

**7-Rehabilitating works for Al-Saraji School for girls for the account of BECHTEL Co.**

**8-Constructing (15) trusses in the precast houses in Northern Rumaila for the account of South Oil Co.**

**9-Rehabilitation works for two workshops of deletion and receiving At Bab.**

**10-Rehabilitation works for Al-Ahlam Nursery House in Al-Abilah.**

**11-the account of Save the Children Organization.**

**12-Rehabilitation and installing electrical towers from Zubair to Tuba cooperating with Basrah Electrical Projects Department.**

**13-Rehabilitated of the Rumaila School.**

**14-Contract no.124/TZ/2011 Drilling Artesian Wells with lining at Italian Camp (ENI).**





# Other completed projects

**15-Construction of electrical and mechanical Gasd the oil Station in the west of Al-Qurna.**

**16-Constructed of the communication building at the gas station in the West of Al-Qurna.**

**17-Constructed of the electricity transfers building at Northen Rumaila.**

**18-Project of Wafa'a Al-Qa'ed pumping station for the account of Al-Dar Contracts Company.**

**19-Constructed of fence around the oilstations at Al-Lehas and Al-Rumaila Contracts Company.**

**20-Castled oil pumps bottoms (reinforced concrete) and other for boilers and fire extinguishers at the oil regions.**

**21-Rehabilitating works for Al-Saraji School for girls for the account of BECHTEL Co.**

**22-Constructed & Rehabilitation of stations at Artawi Field.**

**23-Constructed of Fuel - stations in Al-Rumaila.**

**24-Contract no. 149/B/2007 (Sewerage pipelining works at Bab Az- Zubair).**

**25-Contract no. 3 4 5/B/2008 cutting & removal Place of two depots ceiling no.1 at third Degassing Station & no.1 at Luhais Degassing Station.**

**26-Contract no. 38/TZ/2011 consented concrete yard for erection Department at Barjesiyah & varied works.**

**27-Contract no. 61/TZ/2011 Earthing works for Wet Oil Unit at Hammar Degassing Station.**



# GALLERY

# SJ

SHAMS AL-JAZAE'ERY CO.LTD.  
للمقاولات العامة والتجهيز المحدودة





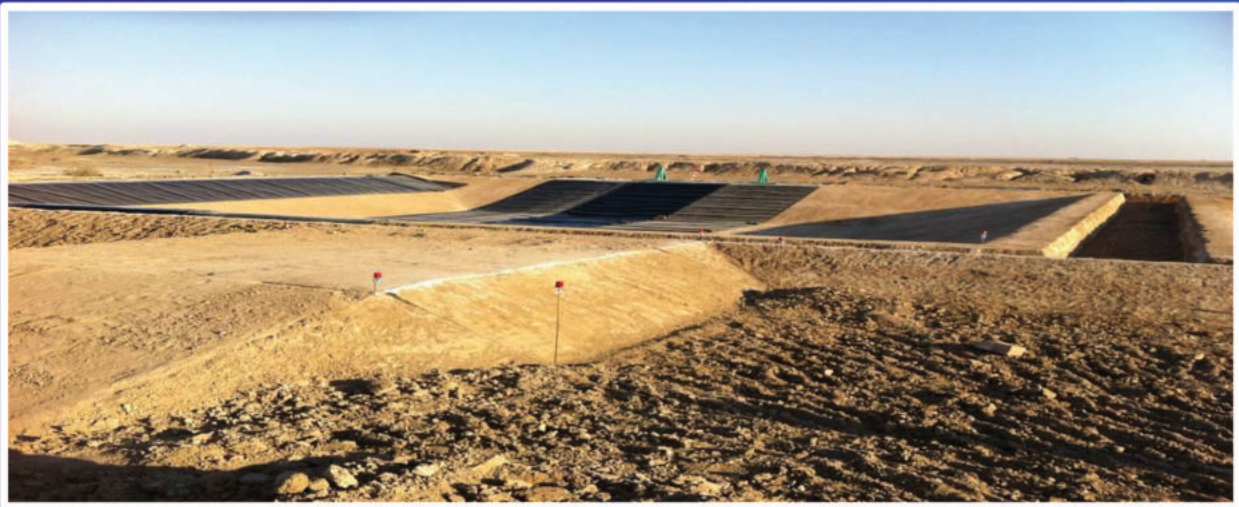



















An icon depicting a handshake inside a heart shape, with three stylized human figures below it, all connected by a network of lines. The icon is white and positioned to the left of the text.

# OUR CLINETS

**Basra Oil Company**  
**Basra Gas Company**  
**Marlog Corporation**  
**In Oil Company**  
**Luk Oil Company**  
**Shell Company**  
**The Italian Company ENI**  
**DHL Company**  
**Agility Company**  
**Al-Rashed Company**  
**Al Dana Company**





## SOME CONTRACTS FOR COMPLETED WORK

جمهورية العراق  
وزارة النفط  
شركة نفط الجنوب  
(شركة عامة)

Republic of Iraq  
Ministry of Oil  
South Oil Company  
(State Co.)

العدد : ٧٧٧٠٥  
التاريخ : ١٤ / ١٠ / ٢٠١٤  
مكتب المدير العام/قسم القانوني

الى محافظة البصرة / قسم العقود الحكومية  
مديرية بلدية البصرة

م / تأييد

استنفاً الى الطلب المقدم من قبل السيد محمد طوي عباس / المدير المفوض لشركة شمس الجزائرية للمقاولات العامة المحدودة، توريد لكم تعالفة معنا بتنفيذ وانجاز اعمال ل العقود المدرجه ادناه لصالح شركتنا بصفة مقاول فردي ومدير مفوض للشركة اعلاه .

ت	رقم العقد	موضوع العقد
١	٢٠٠٤/٢٥٨	تنظيف النور الجاهزه في الرميثة الشمالية
٢	٢٠٠٤/٢١٦	انشاء سقفة حماية المواد في محطة عزل غاز الفريجات
٣	٢٠٠٥/١٧	تنظيف النور الجاهزه في الرميثة الشمالية
٤	٢٠٠٥/١٨٣	تنظيف النور الجاهزه في الرميثة الشمالية
٥	٢٠٠٦/١٠٠	انشاء حمامات عماد ٢ في مخزن الرميثة تشنقية
٦	٢٠٠٧/١٤٩	اصلاح شبكة مجاري في باب الزبير
٧	٢٠٠٨/٣٤٥	تطهير ورفق صفايح سفك الخزائين في محطة عزل غاز التقلية
٨	٢٠٠٩/٣١٤	انشاء حمامات لمخزن الفرطاسية في باب الزبير

وبناء على طلبه زود بهذا التاييد  
مع التقدير . . .

صوره منه الى  
مكتب السيد المدير العام/ للتفضل بالاطلاع بمع التقدير  
القسم القانوني  
الاصفياره المركزيه

المدير العام  
علي بلال الحائري

Basra Gov. No 240, Bab Alubbar, Basra, Iraq  
Tel : 009644032330(30)  
Fax : 00964403237282  
E-mail: dgoffice@soc.gov.iq  
soc\_ftp@yeshoo.com  
Website : www.soc.gov.iq

العراق - البصرة - حي البصرة - قريه/عائده - ٣٢٤  
ص. ب. : 240 - هاتف : 009644032330(30)  
فاكس : 00964403237282  
البريد الإلكتروني : dgoffice@soc.gov.iq  
soc\_ftp@yeshoo.com  
الويب : www.soc.gov.iq

بسمه تعالی

Basra Governorate  
Directorate of government  
contracts

العدد : ١٥٢١  
التاريخ : ٢٠١٤ / ١٠ / ٢٠١٤

جمهورية العراق  
محافظة البصرة  
مديرية العقود الحكومية  
الشعبة الفنية

إلى / وزارة التخطيط / دائرة مسجل الشركات  
م / تأييد أعمال منجزة

اشارة الى طلب ( شركة شمس الجزائرية للمقاولات ) الرقم بلا في ٢٠١٤/٨/٤ ، توريد قيام الشركة بالعمل على المشاريع المدرجة تفاصيلها بالجدول ادناه . للتفضل بالاطلاع ... مع التقدير.

ت	اسم العمل	مبلغ الاحالة	تقديم العمل	تاريخ الاجاز
١	انشاء طريق الزبيري في منطقة الفرية، بطول ١,١٥ كم منافسة ٧٩/٩ / طرق وجسور ضمن تعميمات برنامج الواردات الانشائية لسنة ٢٠١٢	١٧٣,٢٧٥,٠٠٠ مائة وثلاثة وسبعون مليون وثلاثمائة وخمسة وسبعون الفا دينار عراقي فقط	ممتاز حسب شهادة الاستلام النهائي المرفق طياً	٢٠١٢/١١/٨ حسب كتاب قسم ادارة المشاريع /شعبة الطرق والجسور ذي العدد ٢٠١٣/١٠/١٠
٢	تأهيل ساحة الزمراء في منطقة الجنيمات ، منافسة ٢٨/ديوان ضمن مشاريع الموارنة التشغيلية لسنة ٢٠١٣	٦٧١,٢٥٠,٠٠٠ ستمائة و واحد وسبعون مليون ومائتان وخمسون الفا دينار فقط	قيد الاجاز	نسبة الاجاز ٧٠% حسب كتاب الادارة المتابعة/ قسم الهندسة ذي العدد ٣٢ في ٢٠١٤/٨/٢٧

- كافة الاوليات

المدير العام  
دريد خير الله سوادي  
م / مدير العقود الحكومية

بسمه تعالی  
- الشعبة الفنية .. للعلم والتسليم .  
- قسم المتابعات / للعلم مع التقدير  
- شركة شمس الجزائرية للمقاولات العامة. للعلم والعمل بموجب  
- ملف المشروع .  
- ملف عام

31/8/2014

contracts@basragov.net









# CERTIFICATE OF ATTENDANCE



Attachment 10

## “Sustaining Your Business as U.S. Government Contracts Decrease”

Technical Evaluation Area of Interest

is hereby granted to:

Shams Al-Jaza'ery Company – CEO/Owner

Mr. Mohammed Alawi Abbas

*(Note: Only issue to individual attending the workshop not the Company. If the owner attends, issue as above. This allows the individual to maintain for his personal CV.)*

CLARENCE C CUDE, JR  
MAJ, AD  
CHIEF, RCC-BASRAH

Granted on the 28<sup>th</sup> of March 2010





SHAMS AL-JAZAE'ERY COMPANY  
شركة شمس الجزائري

للمقاولات العامة المحدودة - FOR GENERAL CONTRACTING LTD

 0782 997 9992 - 0771 313 2226

 shamsaljazaery@gmail.com

 Basra - Al-Tuwaisa  
Near Maxi Mall